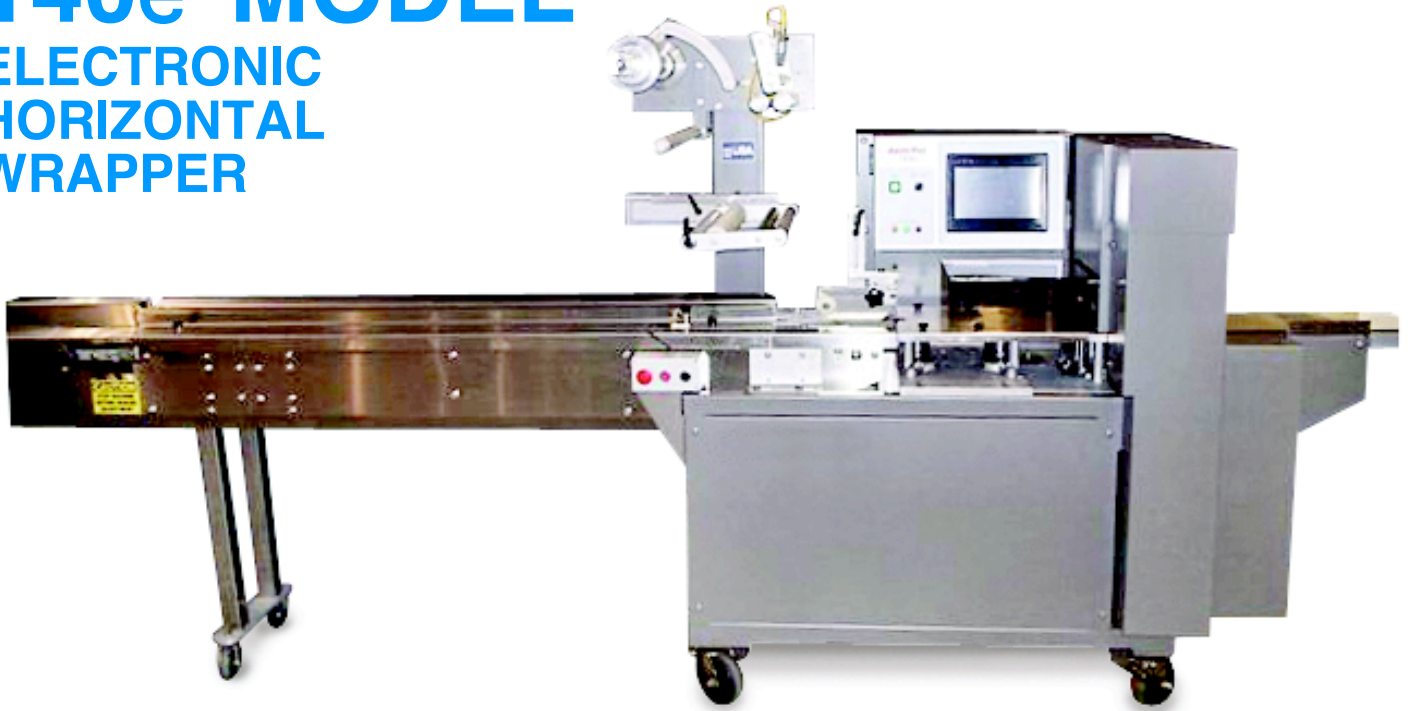


THE PLATINUM PACKAGING GROUP

140e MODEL

ELECTRONIC HORIZONTAL WRAPPER



The 140e Model is designed for speeds up to 250 packages per minute. **Exceptionally Compact**, the 140e Model saves valuable floor space while offering 4.5 feet of unobstructed product feeding space. A cantilevered parent roll backstand with self-centering roll cones conveniently located above the standard adjustable or fixed former can be arranged with an optional electric eye for register print wrapping materials. Full size digitally controlled fin wheels seal a wide range of heat sealable packaging materials beneath the package.

Generous Standard Product Size Range includes a wide film capacity backstand and end crimper which along with our adjustable film former gives you greater product size flexibility at the turn of a knob. Our heavy

duty end crimper drive assures high performance package end sealing and cut-off.

Easy Size Changeover with no tools required for most size changes. The 10" color touch screen allows you to preprogram the product set up information into the machine, making changeover a snap.

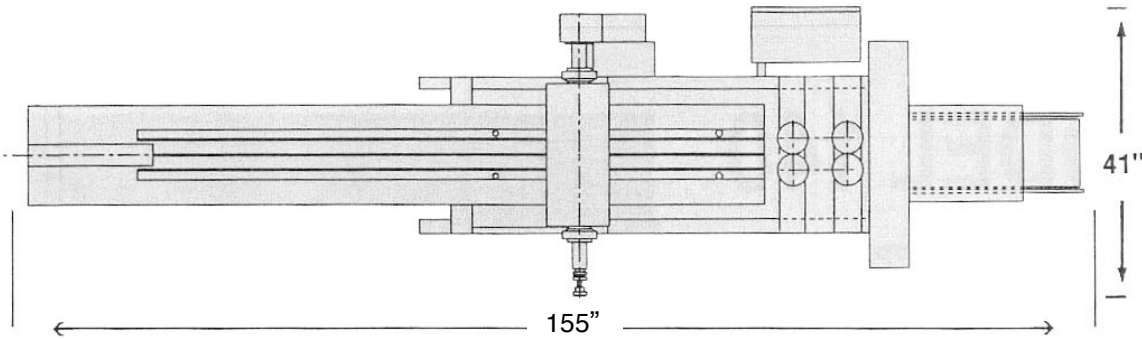
Easily Customized to meet your specific needs the 140e Model is driven by a powerful motor with plenty of reserve power to drive feeding devices and other accessories. Low maintenance, wide range of product sizes, ease of changeover, rugged construction, high performance...all standard in the 140e Model.

THE
PLATINUM PACKAGING
GROUP

So. California Office:
7627 Somerset Blvd.
Paramount, CA 90723

tel: (562) 630-6700
fax: (562) 630-6716
email: info@platinumpkggroup.com

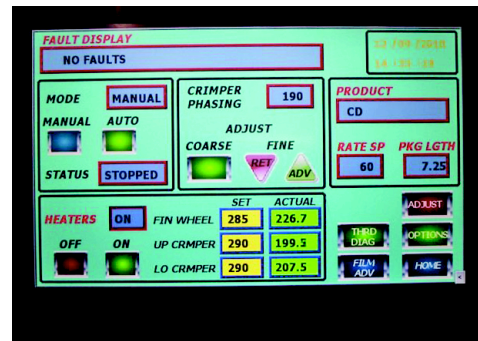
140E Model Horizontal Wrapper



SPECIFICATIONS

- Machine Size (Approx.)**
 Length – 155”
 Width – 41”
 Height – 65”
- Infeed Conveyor**
 Length – 94”
 Feed Space – 54”
 Height Above Floor – 37”
- Wrapping Material**
 Maximum Parent Roll Diameter – 13”
 Roll Length – 20”
 1 Parent Roll
- Fin Seal Assembly** (length seal)
 First Set – Pulling
 Second Set – Sealing
 Third Set – Pulling
- End Crimper** (cross seal)
 1-up x 8” wide
- Product Flow**
 Left to Right, Facing the Control Panel
- Maximum Package Size**
 (Cannot be tolerated simultaneously)
 Length – 4” – 16”
 Width – ½” – 9”
 Height – Up to 2½”
 Larger sizes available
- Powdercoat Finish**
- Electrical**
 230V, 3PH, 60H, 30A
 3 Axis AC Servo Motors & Control
- Weight**
 1800 lbs. base machine
- OPTIONAL EQUIPMENT**
 Product Feeders
 Extended Infeed
 Electric Eye
 No Product/ No Bag (NPNB)
 No Gap/ No Seal (NGNS)

* SPECIFICATIONS ARE SUBJECT TO CHANGE



Simple layout of machine controls and adjustable former for quick