

THE PLATINUM PACKAGING GROUP

PLAT*Machinery* Inverted Horizontal Flow Wrapper

SERVO INVERTED HORIZONTAL FLOW WRAPPER

The high performance **PLAT**Wrapper Inverted servo driven horizontal flow wrapping machine designed with reliability, simplicity and serviceability to produce up to 100 packages per minute with a maximum web width of 19.6" or 500mm.

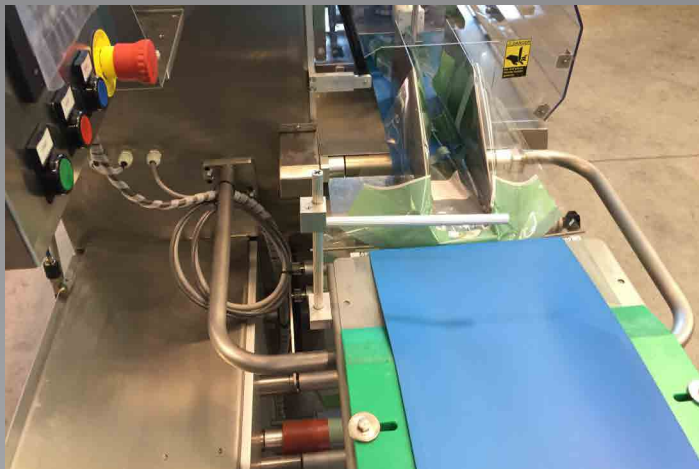
The **PLAT**Wrapper Inverted flow pack machine uses 5 servo motors that create quick and easy changeover and adjustment, reduces product and film waste during production and offers low maintenance costs. Servo drives assures precise positioning, smooth acceleration – deceleration.

Ideal for soft or sticky products, multipacks, and other products that are difficult to push with the lug chain design found on conventional bottom seal flow wrappers. The film is fed from below the product. Hard to handle products are securely carried on top of the packaging film from the former through the cutting head.



LEADING EDGE

The **PLAT**Wrapper family of horizontal flow wrappers is designed for ease of use, reliability, and flexibility. Available in several models, the servo-driven **PLAT**Wrapper fits every budget and production requirement.



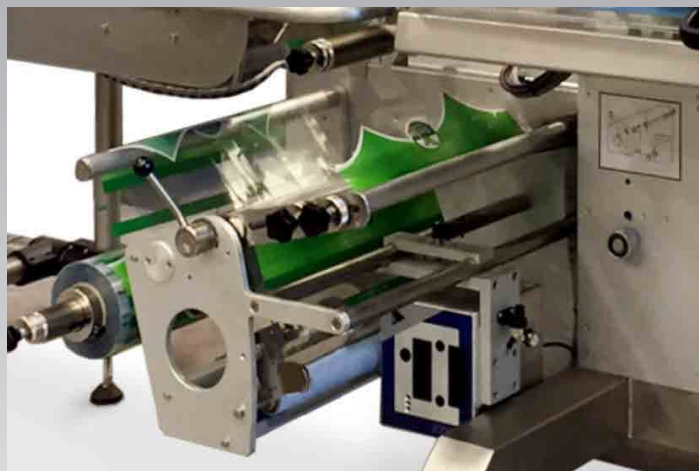
EASY CHANGE-OVER

Product change-over is very simple with belted infeed or dual lug position infeed conveyor and adjustable forming former.



TOP SEAL

Hard to handle products are securely carried on top of the packaging film from the former through the cutting head.



VARIETY OF FILM TYPES

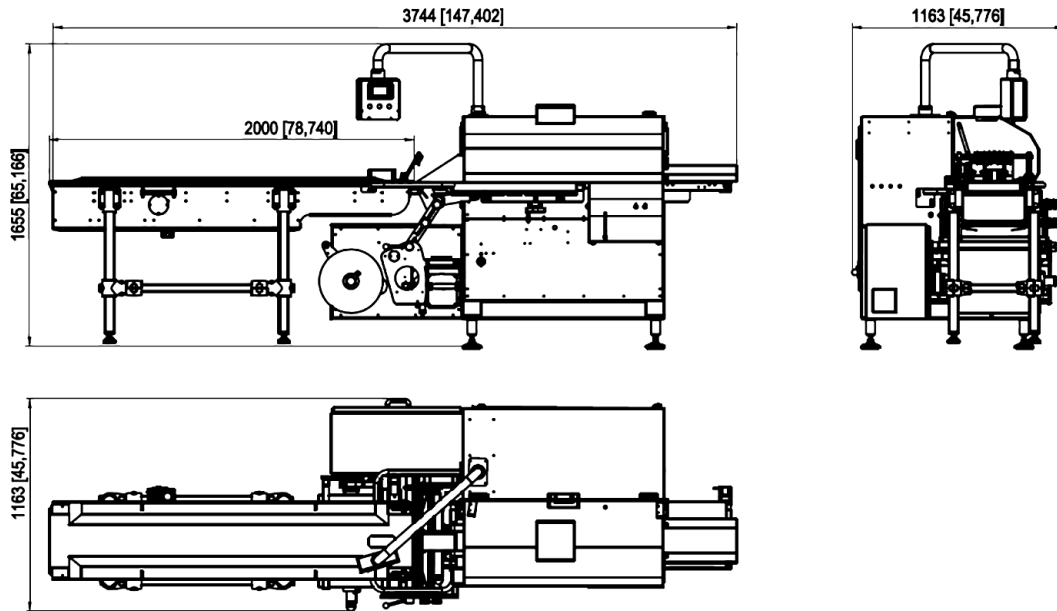
The **PLAT**Wrapper runs a wide variety of materials including polypropylene, microperf, multilayer laminated, co-extruded, foil films, and more.



CONSTRUCTION

Built with quality components, the **PLAT**Wrapper comes standard with stainless steel construction and servo drives.

PLATWrapper Inverted



FEATURES

- Stainless steel frame construction
- Full servo, driven by 5 servo motors
- Belt driven
- Belted or Lugged Infeed conveyor with snap-in pushers for fast changeovers
- Right hand configuration (left to right)
- Cantilevered self cantering film holder
- Color touch screen HMI and Mitsubishi PLC
- Pre-programmable controls for up to 120 recipes
- HMI Integrated temperature control
- Automatic opening of hot finwheels during stoppages to reduce film waste
- Rotary seal jaws, Long Dwell available as an option
- Automatic synchronization of crimper after jams
- Optional No Product / No Bag
- Optional No Gap / No Seal for misplaced products
- Optional photo cell for bag registration

Maximum Web Width

- 19.6" (500 mm) - extra wide 25.5" (650mm) available as an option

Package Width

- Up to 9" (230mm) - extra wide 11.8" (300mm) available as an option

Package Length

- Up to 24" (620 mm)

Maximum Package Height

- Up to 4.7" (120 mm).
- Subject to web width

Max film roll diameter

- 13" (350 mm) 3" (80 mm) Core

Electrical & Air

240V 1 Phase, 15A. And 90 PSI

*All max dimensions are dependent upon machine configuration

Specifications subject to change without notice

THE PLATINUM PACKAGING GROUP

tel: (562) 630-6700 • fax: (562) 630-6716
7627 Somerset Blvd., Paramount, CA 90723

TO PLACE ORDERS:

sales@platinumpkggroup.com

FOR MORE INFORMATION:

www.platinumpkggroup.com

QUESTIONS:

information@platinumpkggroup.com