

THE PLATINUM PACKAGING GROUP

PLAT*Machinery* Rotary & In Line Cup Fillers

Features Of The *RM Series* / Line Of Rotary Cup Filling Machines



Interlocking Safety Guarding

Rotary Machines Models RM 36, Model RM 36-2, Model RM 36-3, Model RM 48

The RM Series Comes In 1, 2 Or 3 Up Configuration (25-30 Cycles Per Minute Max Of 85 Cups Per Minute.) This Machine Offers A Fully Automated Cup Filling And Sealing Rotary Machine. The Machinery Is Suitable For Packaging A Wide Variety Of Products, From Liquids To Pastes, Granulated And/or Powdered Products. This Machine Can Be Used For Dairy Products, Salad Dressings, Desserts, Soups, Plus Much More.

OVERVIEW:

Rotary Filling and Sealing Machine with variable speed drive to fill and seal 1 cup per cycle at a rate of 20-40 cycles per minute product volume and consistency dependent.

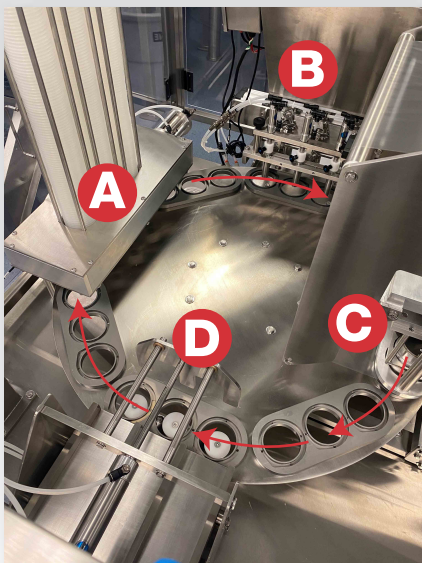
All materials and construction practices are to NSF / 3A standards, all components are NEMA 4, 4x or IP65 or 67.

Machine will come tooled for one container diameter.

Volume: From 1 to 32 ounce

Container: Round, 4 5/8" (410mm) or Rectangle or square

Seal Material: Roll Stock Film or pick and place pre-die cut foil



60" x 72" Footprint

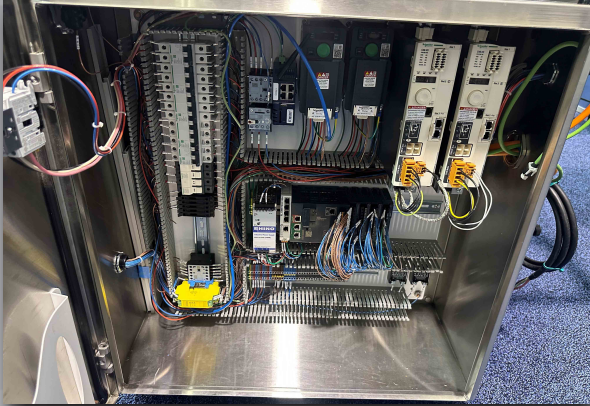
- A** Cup Dropper
 - B** Fill Station
 - C** Heat-Seal head
 - D** Discharge Arm
- (Between **C** and **D** a Copper / Litter can be located)



Quick Release Heat-Seal / Tooling
Without The Use Of Tools



- * Touch Screen PLC With Remote Access
- * PLC Controls Servo Fillers, Film Advance & Recipe Choice Through Screen



- * Impeccable Electrical Box/ Attention to detail



Access Frame & Top Plate 3/8" & 16 G Stainless Steel



Quick Release Filler / Easier For Changeover Or Cleaning

- Interlocking Safety Guarding
- Designs that minimize sanitary 'Catch Points'
- Timing belts no need for lubrication
- IPP 65-67 Rated. Wash Down Nema 4
- UL Certified Components / CE (European standards)
- Primarily US Parts (Non-Metric) / FDA Approved Material



Immaculately Put Together
Attention To Detail



No Cup No Fill Sensor



Top Grade Components / Build

STANDARD FEATURES:

- Servo film feed
- No container no fill, no seal, no lid
- Fault Diagnostics
- Pass code protected maintenance screens
- EWON remote PLC access for online trouble shooting (Wi-Fi connection needed)
- Stainless Casters

STATIONS:

Cup Drop: Station will utilize a timed escapement to automatically load the cups. Vacuum assist pull down. The typical run time is about 2 - 3 minutes with each load in the magazine. This can be loaded while the machine is operating.

Filler: Piston style with shut off nozzles. Fine adjustment on the piston fillers assures accuracy. All components are made from stainless steel and acetyl. If no cup is present it will not fill. A 10 gallon conical hopper is supplied.

Heat Seal: PID Controlled heater heads with stainless knife blades to seal and cut film with minimum allowable scrap. Scrap take up is easily accessed and removed. Film feed is servo controlled for either random feed or registered print with optional slot sensor. Film roll diameter not to exceed 10 inches. If no cup is present the station will not operate.

Out Feed: Pneumatically timed lift and sweep discharge.

POWER REQUIREMENTS:

Electric:

208/220 volts single phase
(Other power requirements available)

Compressed Air:

80 PSI, 15 CFM clean dry air



THE PLATINUM PACKAGING GROUP

tel: (562) 630-6700
7627 Somerset Blvd., Paramount, CA 90723

TO PLACE ORDERS:
sales@platinumpkggroup.com

FOR MORE INFORMATION:
www.platinumpkggroup.com

QUESTIONS:
information@platinumpkggroup.com